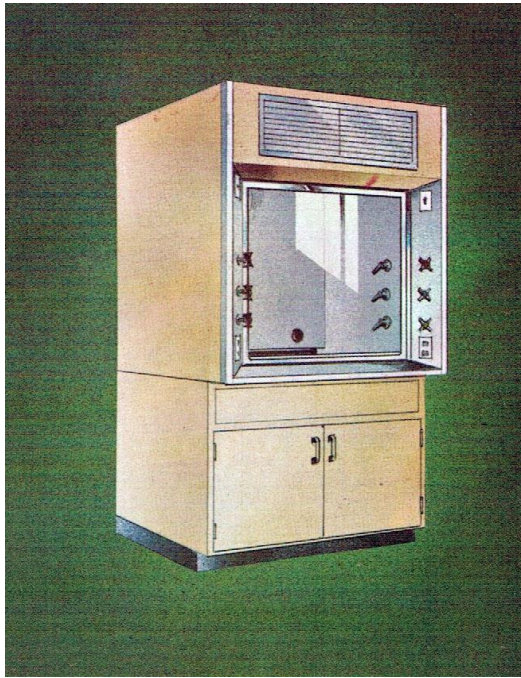


AIR FOIL FACE FUME HOODS



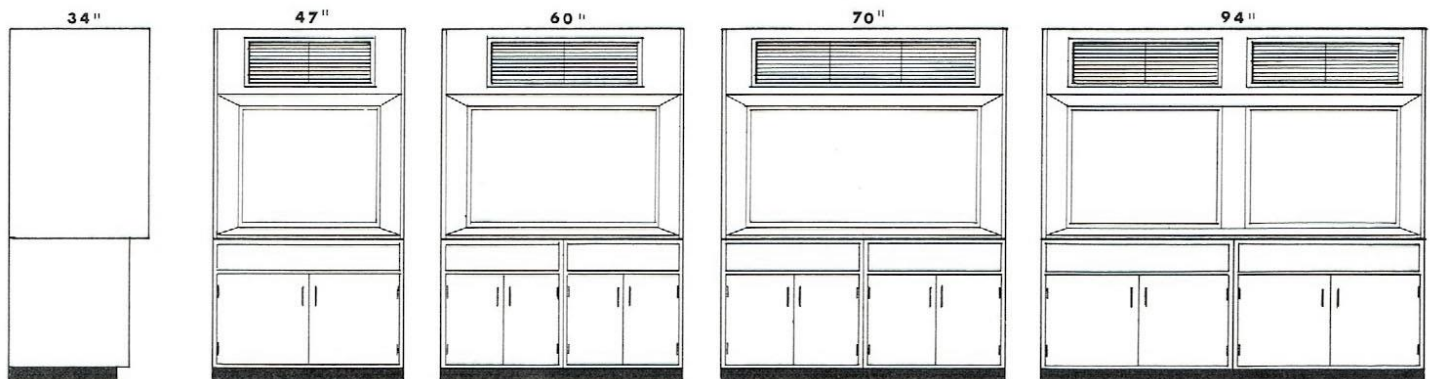
The air foil face profile of these fume hoods eliminates the creation of eddy currents. Besides the stainless steel air by-pass grille in the upper spandrel, there is an air by-pass below the stainless steel lower air foil, assuring constant air removal regardless of sash position. These double wall superstructures have an electro zinc plated steel exterior with an acid resistant finish. The front posts and sash track are of stainless. The lined flushed interior, with lower and upper adjustable baffles is illuminated by vapor proof florescent light fixture above. The counter-balanced stainless steel sash has safety glass.

Hood superstructure includes a blower switch with pilot light, a light switch, four 110 volt AC outlets and remote controlled valves for two cold water, two gas, and air cocks. Additional or different services are available upon request.

The 1-1/4" thick tops and base cabinet understructures are sold separately. The working tops are offered with an oval cup sink.

Overall dimensions including base cabinet and top are 30" wide 7'-2" high, and length as chosen.

Superstructure FUM-294 has an 82" unobstructed interior length.



END VIEW

FUM-247

FUM-260

FUM-270

FUM-294

For low velocity air operations, these air foil face hoods constitute an asset to any laboratory since their use reduces the amount of air removal from a room. Their aerodynamic face insures maximum efficiency of operation. These superstructures are adaptable can easily incorporate special requirements and services to meet the needs of specific laboratory processes.

Complete mechanical roughing-in information for any hood shown is available upon request.