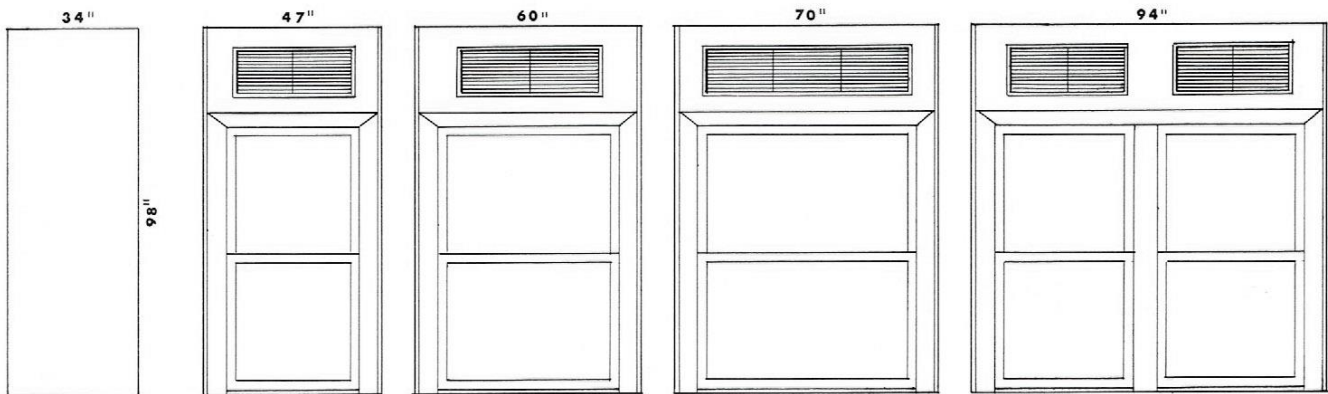
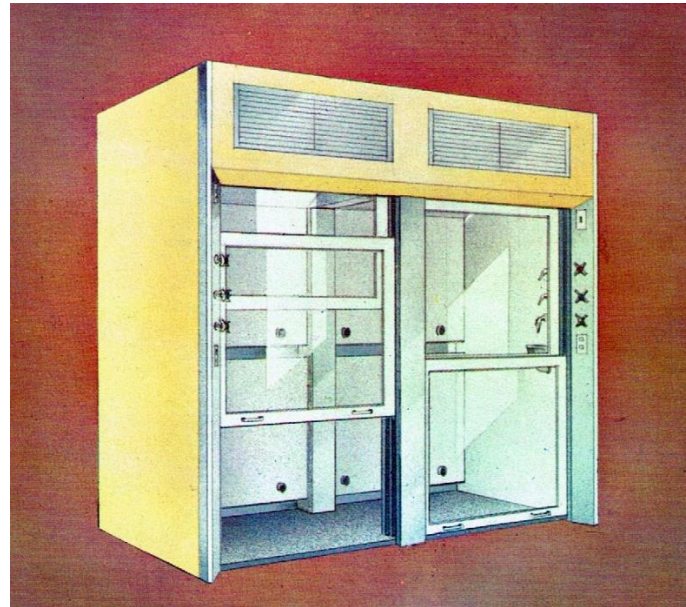


AIR FOIL FACE WALK-IN FUME HOODS

These hoods, with auxiliary air supply flowing through the stainless steel grill to the face the hood, are designed to provide ample vertical interior clearance to accommodate tall apparatus set-ups. The interior, illuminated by vapor proof fluorescent light fixtures, have lower intermediate and upper adjustable baffles. The counterbalanced dash with safety glass, and the air foil posts are of stainless steel. Floor slabs are of 1-2/4" thick Colorith. The exteriors are of electro zinc plated steel with an acid resistant finish. Supply an exhaust duct connection collars are provided.

Unless otherwise requested, each of these fume hoods is offered with a blower switch with pilot light, a light switch, four 110 volt AC outlets, two wall mounted lead oval cup sinks, and remote control valves for two cold water cocks, two gas cocks, and two air cocks.



END VIEW

FUM-3047

FUM-3060

FUM-3070

FUM-3094